



Styletto AX Charger

User Guide

Content

Before you start	4
Daily use	7
Charging	7
Charging the internal battery of your charger	17
Checking the battery capacity of your charger	23
Frequently asked questions	26
Maintenance and care	30
Cleaning	30
Professional maintenance	31

Important safety information	32
Safety information on lithium-ion rechargeable batteries	32
Safety information for charger	37
Further information	44
Operating, transport and storage conditions	44
Technical data of the power supply	46
Disposal information	46
Explanation of symbols	47
Troubleshooting for the charger	52
Important information	56
Conformance information for charger	56
Country-specific information	58

Before you start

This device is intended to charge our specific hearing instruments with built-in power cells (lithium-ion rechargeable batteries). Your Hearing Care Professional will advise you on the compatible models.

The charger is only intended for indoor use. Observe and follow the operating conditions in section "Operating, transport, and storage conditions".

The charger is not intended as a means of storage for transportation of hearing instruments.

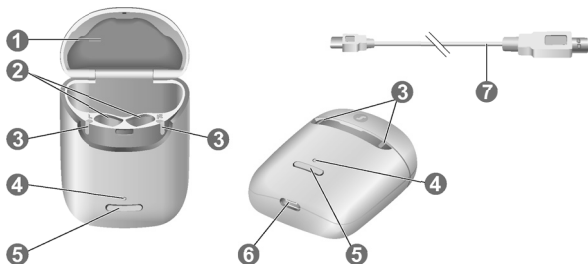


CAUTION

Read this user guide thoroughly and completely and follow the safety information in this document to avoid damage or injury.



The device may not look exactly like the guiding illustrations in these instructions. We reserve the right to make any changes we consider necessary.



1 Lid

2 Charging slots

3 Status LEDs, hearing instrument

4 Status LED, charger

5 Button

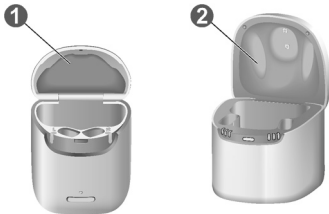
6 USB port for
power supply

7 USB power cable

Daily use

Charging

In addition to Styletto AX Charger ❶, we offer D&C Charger slimRIC ❷. For further information on this charger, please contact your Hearing Care Professional, and follow the instructions in the user guide.



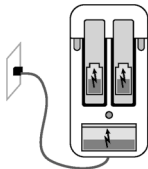
How you can use the charger

You can use your charger in three different ways.

Charging via electrical outlet

When the charger is plugged in or placed on a wireless charger, it charges the hearing instruments (if they are placed in the charger) and it charges the integrated battery at the same time.

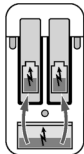
As long as the charger is being charged by an external power source, charger LED shows the charging status of the integrated battery and the LEDs for the hearing instruments show the status of the hearing instruments.



For power saving after wireless charging, the LEDs will turn off once charger and hearing instruments are fully charged.

Mobile charging

When you are mobile with no electrical outlet available, you can still charge your hearing instruments. Energy is fed from the charger's integrated battery into your hearing instruments. The charger must be turned on to do so.



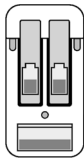
The charging status of charger and hearing instruments is shown by pushing the button or opening the lid.

Safekeeping

When charging of hearing instruments is completed, safely store your hearing instruments inside the charger with lid closed.

In case you want to store the hearing instruments for a longer time, you can turn off the charger.

The charger can only be turned off when there is no power source connected into the charger.



Turning the charger on or off

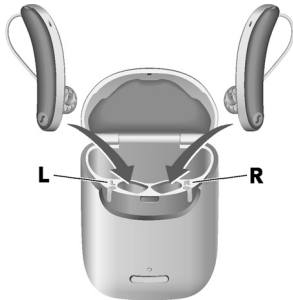
When the charger is connected to an electrical outlet, it is automatically turned on and cannot be turned off.

During mobile charging, press and hold the button for 5 seconds to turn the charger on or off.

- When the charger turns on, the status of the hearing instruments and the status of the charger's internal battery are displayed for 7 seconds.
- When the charger turns off, the front LED lights up green and fades out over a period of approximately 7 seconds. Shut down is complete after approximately 7 seconds.

Charging hearing instruments

- ▶ Place the right hearing instrument in the charging slot marked with an "R", and the left hearing instrument in the charging slot marked with an "L".
- ▶ Stow the ear pieces nicely.
- ▶ Close the charger's lid for battery power saving reasons.
- ▶ The hearing instruments are automatically turned off and start charging. The charging status is shown for 7 seconds.



If the status LEDs do not light up when you insert the hearing instruments, check the following:

- The hearing instruments are not correctly placed. Push them slightly into their charging slots or close the charger's lid.
- The charger is turned off. Press and hold the button for 5 seconds to turn on the charger.
- The charger's internal battery is too low for mobile charging. Connect the charger to an electrical outlet.

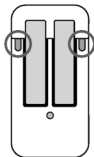


NOTICE

If you put a hearing instrument in the wrong charging slot, the receiver cable may be damaged when closing the charger's lid.

Charging status of hearing instruments

The **LED** next to the hearing instrument indicates the charging status of the hearing instrument. Note that the status is only displayed immediately after putting the hearing instruments in the charger, when you briefly press the button or when you open the lid. When the charger is off, no status is displayed at all.



LED Status description

Pulsing green

Hearing instrument is being charged.

LED Status description

Green

Hearing instrument is fully charged.

LED is off

No hearing instrument is in the charger, hearing instrument is not placed correctly, or charger is off.

Pulsing orange

Cooling phase. Charging is resumed when the device has cooled down. Please refer to section "Troubleshooting".

LED Status description

Blinking red

Hearing instrument error. Please refer to section "Troubleshooting".

Low power indication of the hearing instruments

You will hear an alert signal to indicate the power cell is running low. The signal will be repeated every 20 minutes. Depending on the usage of your hearing instruments, you have approximately 1.5 hours to charge your hearing instruments before they stop working.

Charging the internal battery of your charger



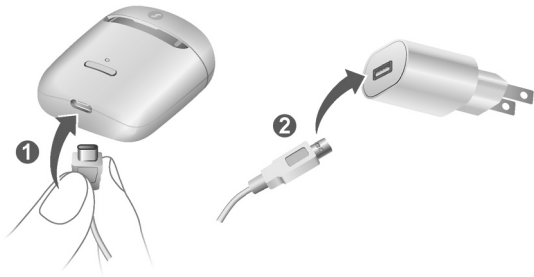
NOTICE

Use of incompatible parts poses a risk of malfunction.

- ▶ Use only the power supply and country specific adapter that is provided with the charger.

Ensure your electrical plug complies with the requirements. Refer to the section "Requirements for the electrical plug" in "Safety information for charger".

- ▶ Connect the USB-C side of the USB power cable to the USB port of the charger ❶.
- ▶ Connect the other side of the USB power cable to a suitable electrical plug ❷.



The internal battery starts charging. When hearing instruments are inserted, they start charging as well. The charging status of the charger is shown permanently.

Charging the internal battery with wireless charging



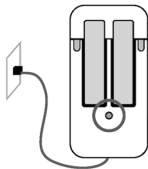
- Place the charger on a wireless transmitter pad. After a few seconds the internal battery will start charging indicated by the pulsing green LED of the charger. When hearing instruments are inserted they start charging as well indicated by the pulsing green LED of the hearing instruments LED. If the LED is off, please re-align the charger to the center of the transmitter pad.

The charging status of the charger is shown until it is fully charged. After that the LEDs are turned off for power saving reasons.

Charging status of your charger

The **front LED** indicates the charging status of the charger and its internal battery.

While the internal battery is being charged, the charging status is indicated as follows:



LED Status description

Pulsing green

Internal battery is being charged.

Green

Charger is fully charged.

LED is off (wireless charging)

Charger is fully charged.

Pulsing orange

Cooling phase. Charging is resumed when the device has cooled down. Please refer to section "Troubleshooting".

LED Status description

Blinking red

Charger error. Please refer to section "Troubleshooting".

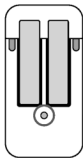
For an overview of the hearing instruments' charging status, refer to the section "Charging hearing instruments".

Checking the battery capacity of your charger

To check whether the charger's internal battery has enough capacity to fully charge your hearing instruments when you are mobile:

- ▶ Disconnect the charger from the electrical outlet.
- ▶ Briefly press the button.

The **front LED** indicates the status of the charger's internal battery for 7 seconds.



LED Status description

Green

Internal battery has enough capacity to fully charge two hearing instruments.

Orange

Internal battery does **not** have enough capacity to fully charge two hearing instruments.

Blinking orange

Internal charger battery empty. Charging of hearing instruments is not possible.

If the status LED does not light up when you press the button, check the following:

- The charger is off. Press and hold the button for 5 seconds to turn on the charger.
- The charger's internal battery is too low to display the status. Connect the charger to an electrical outlet, wait several minutes and try again.



The internal battery has a capacity of 400 mAh.

Frequently asked questions

You may have some questions on how to best charge your hearing instruments. Read the questions and answers below. If you have more questions, your Hearing Care Professional will help you.



Why do my hearing instruments not turn on when I take them out of the charger?

Check the following:

- The charger is off. Press and hold the button for 5 seconds to turn on the charger. Refer to the section "Turning the charger on or off".

- The charger's internal battery is too low. Connect the charger to an electrical outlet.

Now take your hearing instruments out of the charger.



How can I turn off my hearing instruments without charging them?

- ▶ Place the hearing instruments in the charger. Ensure that they are inserted correctly (status LEDs light up). The hearing instruments are automatically turned off and start charging.
- ▶ Disconnect the charger from the electrical outlet.
- ▶ Press and hold the button for 5 seconds to turn off the charger. Charging stops.



What should I pay attention to when charging?

The hearing instruments and charger must be clean and dry. Observe the operation conditions in section "Operating, transport, and storage conditions". Avoid charging at high temperatures, as this can shorten the life span and capacity of the power cell.

If you use the charger in a very warm environment, note that it will stop charging if the hearing instruments or the charger's temperature exceeds 42 °C (107 °F). The LED of the hearing instrument and/or of the charger LED will pulsate orange during the cooling phase. Charging resumes

automatically after the device has cooled down. Do not touch the hearing instruments until the front LEDs are pulsing green, the hearing instruments may be hot.

Maintenance and care

Cleaning



NOTICE

Risk of injuries caused by electric shock!

- ▶ If cleaning is required, disconnect the charger from the power supply.
- ▶ Clean the charger with a soft, dry tissue.
- ▶ Never use running water or immerse the charger in water.
- ▶ Do not sterilize or disinfect the charger.

Professional maintenance

Your Hearing Care Professional can perform a thorough professional cleaning and maintenance.

Ask your Hearing Care Professional for your individual recommendation of maintenance intervals and for support.

Important safety information

Safety information on lithium-ion rechargeable batteries



WARNING

A lithium-ion rechargeable battery is permanently built into your device. Incorrect use of the device can cause the lithium-ion rechargeable battery to burst.

Risk of injury, fire or explosion!

- ▶ Follow the safety instructions for lithium-ion rechargeable battery in this section.



WARNING

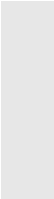
Risk of electric shock!

- ▶ Connect the charger only with a USB power supply which complies with IEC 60950-1 and/or IEC 62368-1.



WARNING

- ▶ Observe the operating conditions.
- ▶ Pay special attention to protect your device from extreme heat (e.g. fire, microwave oven, induction oven or other high induction fields) and sunlight.
- ▶ Charge your hearing instruments only with an approved charger. Ask your Hearing Care Professional for support.
- ▶ Do not disassemble the device.
- ▶ Do not use the device in explosive atmospheres.

- 
- ▶ Do not use devices that are deformed or obviously damaged.
 - ▶ Do not use the device when its performance after charging reduces considerably. Return the device to your Hearing Care Professional.
 - ▶ Do not dispose of the device in fire or water.



WARNING

- ▶ Replacement and repair have to be performed by a professional. Therefore:
- ▶ Do not repair or replace the lithium-ion rechargeable battery yourself.
- ▶ In the unlikely event of a lithium-ion rechargeable battery bursting or exploding, keep all combustible materials away.

In any of the above cases, return your device to the Hearing Care Professional.

Safety information for charger

Personal safety for charger



WARNING

Risk of electrical shock!

- ▶ Do not use obviously damaged devices and return them to point of sale.



WARNING

Risk of injury!

- ▶ Do not use obviously damaged devices and return them to point of sale.



WARNING

Note that any unauthorized changes to the product may cause damage to the product or cause injury.

- Use only approved parts and accessories. Ask your Hearing Care Professional for support.



WARNING

Risk of explosion!

- Do not use your device in explosive atmospheres (e.g. in mining areas).



WARNING

Risk of burns!

- ▶ Do not place anything other than your hearing instruments in the charger.



WARNING

Choking hazard!

Your device contains small parts which can be swallowed.

- ▶ Keep hearing instruments, batteries and accessories out of reach of children and mentally disabled persons.
- ▶ If parts have been swallowed consult a physician or hospital immediately.



WARNING

Charging systems may interfere with measuring devices and electronic equipment.

- ▶ In hospitals: The charger complies with CISPR 35 and CISPR 32. Therefore the use of the charger in hospitals should be permissible. Nevertheless the charger may interfere with highly sensitive devices. In those cases appropriate steps shall be taken (increase distance from sensitive devices or disconnect the charger from power supply).



WARNING

Interference with implantable devices

- ▶ The device can be used with all electronic implants that comply with the ANSI/AAMI/ISO 14117:2012 Electromagnetic compatibility standard for human implants.
- ▶ In case your implant does not comply with the ANSI/AAMI/ISO 14117:2012 standard, consult the manufacturer of your implantable device for information about the risk of disturbance.

Product safety for charger



NOTICE

- ▶ Protect your device from extreme heat. Do not store it in direct sunlight.



NOTICE

- ▶ Protect your devices from high humidity.



NOTICE

- ▶ Do not dry your devices in the microwave oven.



NOTICE

Do not drop. Internal components may get damaged.

Requirements for the electrical plug

Use an electrical plug with an output voltage of 5 V and a minimum output current of 500 mA.



WARNING

Risk of electric shock!

- ▶ Connect the charger only with a USB power supply which complies with IEC 60950-1 and/or IEC 62368-1.

Further information

Operating, transport and storage conditions

Operating conditions	USB-charging	Wireless charging
Temperature	10-35 °C 50-95 °F	10-30 °C 50-86 °F
Relative humidity	20-75 %	20-75 %
Atmospheric pressure	1050-1060 hPa	1050-1060 hPa

During extended periods of transport and storage, please observe the following conditions:

	Storage	Transport
Temperature	10-40 °C 50-104 °F	-20-60 °C -4-140 °F
Relative humidity	10-80 %	5-90 %
Atmospheric pressure	1050-1060 hPa	1050-1060 hPa



WARNING

Risk of injury, fire or explosion during shipment.

- Ship power cells, hearing instruments and/or charger according to local regulations.

Technical data of the power supply

Input voltage:	100-240 V AC
Input current:	0.15-0.3 A
Input frequency:	50-60 Hz
Output voltage:	5 V DC
Output current:	1 A

Disposal information



NOTICE

- Recycle devices and packaging according to national regulations.



NOTICE

- ▶ To avoid environmental pollution, do not throw devices into household trash.
- ▶ Recycle or dispose devices according to local regulations.

Explanation of symbols

Symbols used in this document



Points out a situation that could lead to serious, moderate, or minor injuries.



Indicates possible property damage.

Symbols used in this document



Advice and tips on how to handle your device better.



Frequently asked question.



CE compliance label, confirms compliance with certain European Directives, refer to section "Conformance information".



Indicates the legal manufacturer of the device.

Symbols on the device or packaging



EMC and radio communications compliance label Australia, refer to section "Conformance information".



Do not dispose of the device with general domestic waste. Read more in section "Disposal information".



Packaging can be recycled.



Read and follow the instructions in the user guide.

Symbols on the device or packaging



Keep dry during transportation.



Temperature during transportation.

Read more in section

"Operating, transport and storage conditions".



Relative humidity during transportation. Read more in section

"Operating, transport and storage conditions".



Atmospheric pressure during transportation. Read more in section

"Operating, transport and storage conditions".

Symbols on the device or packaging



Medical device.



Compatible with Qi-certified wireless chargers.*



Bluetooth® low energy technology.

* The Qi logo is a trademark of the Wireless Power Consortium.

Troubleshooting for the charger

Problem and possible solutions

No LED lights are on.

- Check if the power supply is connected correctly.
-

Problem and possible solutions

LEDs are pulsing orange.

Charger has reached the temperature limit and is now in a cooling phase. Charging is resumed after cooling down (about 15 minutes).

- Do not touch the hearing instruments while the LEDs are pulsing orange. The hearing instruments may be hot.
 - In case the charger enters cooling phase multiple times during charging, please make sure to place the charger in an environment that complies with the recommended operating conditions.
-

Problem and possible solutions

Charger LED is blinking red.

An error in the charger has occurred.

- Take the hearing instruments out of the charger and disconnect the charger from the power supply.
- Reconnect the charger to the power supply and re-insert the hearing instruments in the charging slots.

If the LEDs are still blinking red:

- Take the hearing instruments out of the charger and disconnect the charger from the power supply.
 - Contact your Hearing Care Professional for support.
-

Problem and possible solutions

Hearing instrument's LED is blinking red.

An error in the hearing instrument has occurred.

- Take the respective hearing instrument out of the charger and disconnect the charger from the power supply.
 - Contact your Hearing Care Professional for support.
-

Consult your Hearing Care Professional if you encounter further problems.

Important information

Conformance information for charger

The CE mark indicates conformity with the following European directives and regulations:

- 2017/745 concerning medical devices.
- 2014/53/EU concerning radio equipment
- 2011/65/EU concerning restriction of hazardous substances

The CE mark indicates conformity with certain European directives and regulations. The full text of the declaration of conformity can be obtained from www.wsaud.com/signia.

This device complies EN 55011:2016 / A1:2017 Group 1 Class B.

This device complies with Part 18 of the FCC Rules and with CAN RSS-216 / CNR-216.

Operation is subject to the following conditions:

- This device may not cause harmful interference,
- this device must accept any interference received, including interference that may cause undesired operation, and
- the user shall keep a minimal distance of 20 cm (8 in) during the charging process.

Country-specific information



Legal Manufacturer

WSAUD A/S
Nymøllevej 6
3540 Lynge
Denmark

Document No. 04759-99T02-7600 EN

Order/Item No. 210 131 11

Master Rev02, 08.2021

© 08.2021, WSAUD A/S. All rights reserved



www.signia.net